
PH 2/1 PALE ROSE BRASS TABLE LAMP

Designed by Poul Henningsen



Technical specifications

Materials

Shades: Mouth-blown, four-layered, pale-rose-colored glass, glossy on the outside, sandblasted on the inside. Top plate, base, and stem: Untreated brushed brass with fine hairlines. Please note that the untreated brass will change over time and develop a patina.

Finishes

Untreated brushed brass with fine hairlines. Pale-rose-colored glass with white sandblasted interior.

Mounting

White fabric cord with plug.

Cord length: 12'.

Through-switch. For mounting instructions, see download section on the product detail page.

Information

Please note that the brass is untreated. This means that the surface will change over time and develop a patina if left unpolished. For the E-socket product variants, bulbs are not included. LED light source is part of the product.

PH 2/1 PALE ROSE BRASS TABLE LAMP

Designed by Poul Henningsen

Variant Options

For particular variant options, please check our online Product Variants Configurator on the product detail page.

VARIANT NO.	LIGHT SOURCE	VOLTAGE/FRQ	LUMEN	FEATURES	CABLE
5744908984			304	-	White fabric cord

Variants

VARIANT NUMBER	COLOR, RAL	W / H / L (IN) / W (LB)
5744908984	PALE ROSE	- / - / - IN / 3.7 LB

PH 2/1 PALE ROSE BRASS TABLE LAMP

Pale rose / White fabric cord / - / - / 5744908984

Based on Poul Henningsen's reflective three-shade system, this luminaire provides a soft downward light while emitting a wonderful glow. The pale-rose-colored, mouth-blown, opal-glass shades are glossy on top and sandblasted matte-opal white on the underside to yield a soft and poetic light.



Poul Henningsen

Poul Henningsen was born in Copenhagen by the famous Danish writer Agnes Henningsen. He never graduated as an architect, but studied at The Technical School at Frederiksberg, Denmark from 1911-14, and then at Technical College in Copenhagen from 1914-17.



Product info

Information

Please note that the brass is untreated. This means that the surface will change over time and develop a patina if left unpolished.

Mounting

White fabric cord with plug. Cord length: 12'. Through-switch.

Finish

Untreated brushed brass with fine hairlines. Pale-rose-colored glass with white sandblasted interior.

Materials

Shades: Mouth-blown, four-layered, pale-rose-colored glass, glossy on the outside, sandblasted on the inside.
Top plate, base, and stem: Untreated brushed brass with fine hairlines. Please note that the untreated brass will change over time and develop a patina.

Compliance

Ingress protection IP20. Electric shock protection II w/o ground.

Information

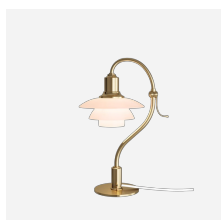
Please note that the brass is untreated. This means that the surface will change over time and develop a patina if left unpolished.



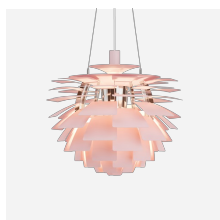
Related products



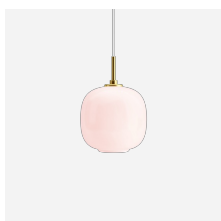
PH 3½-3 Pale Rose Brass
Pendant



PH 2/2 Question Mark Pale
Rose Table Lamp



PH Artichoke Pale Rose



VL45 Radiohus Pale Rose
Pendant



PH 3/3 Pale Rose Pendant



PH 3/2 Pale Rose Table Lamp

Spare parts & accessories

Product	Variant number
PH 2/1 Table diffuser glass	5744164317
PH 2/1 Table, Pale Rose lower shade	5744168737
PH 2/1 Table, Pale Rose middle shade	5744168740
PH 2/1 Table, Pale Rose top shade	5744168753
PH 2/1 Table, Brass shadeholder	5744168766

Data specifications

Colour	Pale rose	Length	-
Width	-	Height	-
Built-in Height	-	IP class	-
Class	-	Net Weight	3.7
Standby (W)	-	Power Factor (P = 100 % / P = 50 %)	-
Inrush Current	-	Light source	-
Kelvin	-	CRI	-
SDCM	-	Lumen	304
Watt	4.0	Efficacy	-
Light control	-	Min. Dim Level (%)	-
UGR Transversal / Axial	-	L80B50 (hours)	-
Driver life	-		