

louis poulsen

PALE ROSE  
COLLECTION

# INTRODUCING THE PALE ROSE COLLECTION

A timeless collection of beautiful pale rose pieces,  
perfect for the modern home



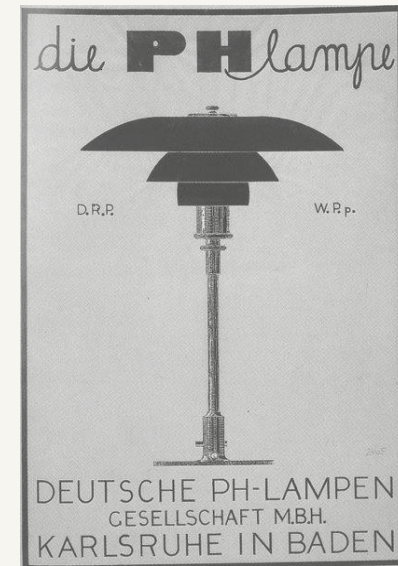
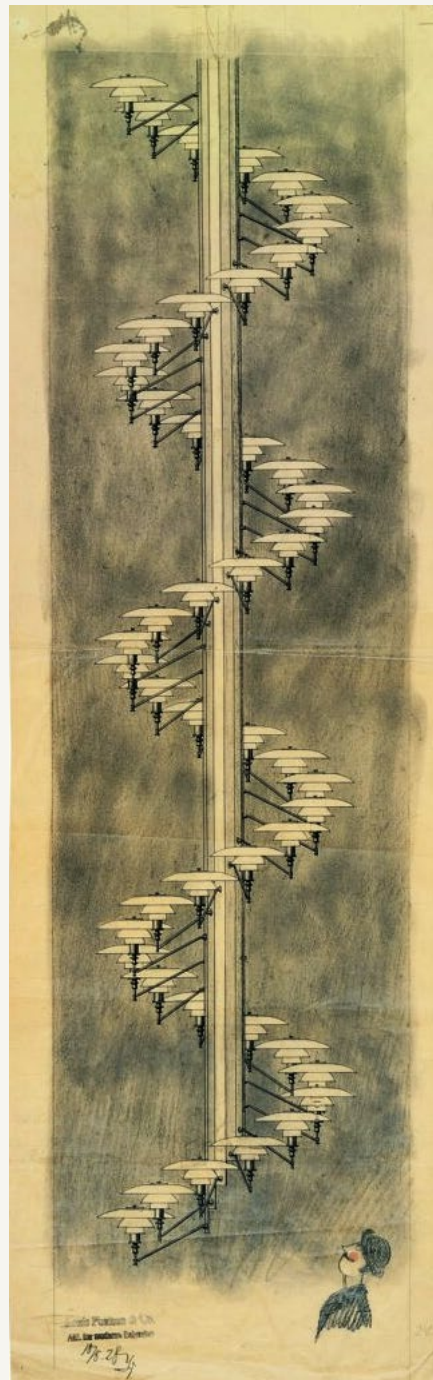
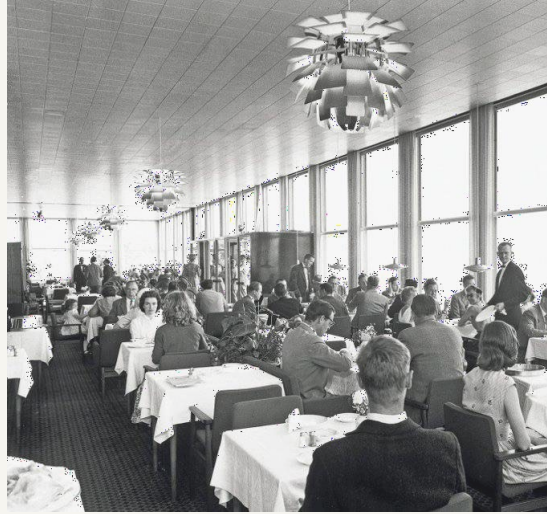
# STORY BEHIND

Around 1930, Louis Poulsen launched a new and extensive colored glass series of PH lamps. To provide people with more warmth and individuality in the home, all the new lamps were available in amber, red and yellow glass, besides the usual opal white, matt or metal shade variants. The series was a huge success.

Inspired by Poul Henningsen's fascination with the interplay between color and light and the interior trends of today, the Pale Rose collection creates a soft and poetic atmosphere in every room.

The Pale Rose edition lamps create a warm, gentle, and poetic light.





# FULL COLLECTION



PH 3½-3 Pendant



PH 3/3 Pendant



PH Artichoke, Ø600



VL45, Ø250



VL 45, Ø175



PH 2/1 Table



PH 3/2 Table Lamp



PH 2/2 Question Mark Brass

# THE PALE ROSE COLLECTION

The Pale Rose Collection combines the beauty and heritage of classic designs and materials, with modern interior trends. The Pale Rose lamps provide a characteristically soft and poetic light.

The soft Pale Rose colour is inspired by Poul Henningsen's fascination with the interplay between light and colour. In particular, the colour used by Poul Henningsen on the inside of the leaves of the original PH Artichoke which was intended to provide warmth and softness to the artificial light of the times.

The expansion of the collection builds on the success of the PH 2/1 Pale Rose Table Lamp and the PH 3½-3 Pale Rose Pendant, which were launched in the summer of 2022.



# PH ARTICHOKE

In 1958, Poul Henningsen designed the PH Artichoke for Langelinie Pavilion, a modernist Copenhagen restaurant, in which the iconic pendant continues to inspire guests. Each of the 72 leaves on the PH Artichoke are carefully mounted on the frame by hand, giving the pendant its distinctive shape, that inspired its name, while also ensuring glare-free light from every angle. The leaves of the original PH Artichoke had a rosy hue on the inner sides, which has inspired the color of the PH Artichoke Pale Rose, a pendant that is a beautiful statement piece



# PH 3/3 PENDANT

The original design of the PH 3/3 Pendant by Poul Henningsen is based on his well-known three-shade system (the System PH), which dates back to 1926 and is carefully calculated to provide soft and glare-free light. Inspired by Poul Henningsen's fascination with light and color, the PH 3/3 Pale Rose Pendant boasts beautiful, mouthblown pale rose glass shades, that are sandblasted on the underside to provide optimal light. This is paired with brushed brass elements such as the socket house and canopy, which will patinate beautifully over time, or can be polished to maintain their appearance. Wherever you choose to hang it, the PH 3/3 Pale Rose Pendant will bathe the room in a uniform, soft light while providing a stunning decorative feature.





# PH 3½-3 PENDANT

Inspired by Poul Henningsen's fascination with the interplay between color and light, and the interior trends of today, the PH 3½-3 Pale Rose Brass Pendant features mouthblown pale rose colored glass shades, which create a whimsical and poetic atmosphere in every room. The elegant expression is enhanced by the brushed brass detailing which, if left untreated, will patinate beautifully over time, giving the lamp character and charm.



# VL45 RADIOHUS

The VL45 Radiohus Pendant was originally designed by Danish architect Vilhelm Lauritzen for his gesamtkunstwerk at the Danish Broadcasting House, also known as Radiohuset.

The original design from the 1940s features a brass suspension and milky-white mouthblown three-layer glass shade, a classic and elegant combination, which was reintroduced by Louis Poulsen in 2016.

A twist on the iconic design, the VL45 Pale Rose Pendant features pale rose coloured mouthblown four-layer glass paired with the brushed brass suspension, a subtle nod to contemporary interior trends.



# PH 2/2 QUESTION MARK

Originally designed by Poul Henningsen in 1931, the PH 2/2 Question Mark Table Lamp is based on the iconic three-shade system known as the System PH, where three mouthblown glass shades provide a soft glare-free light.

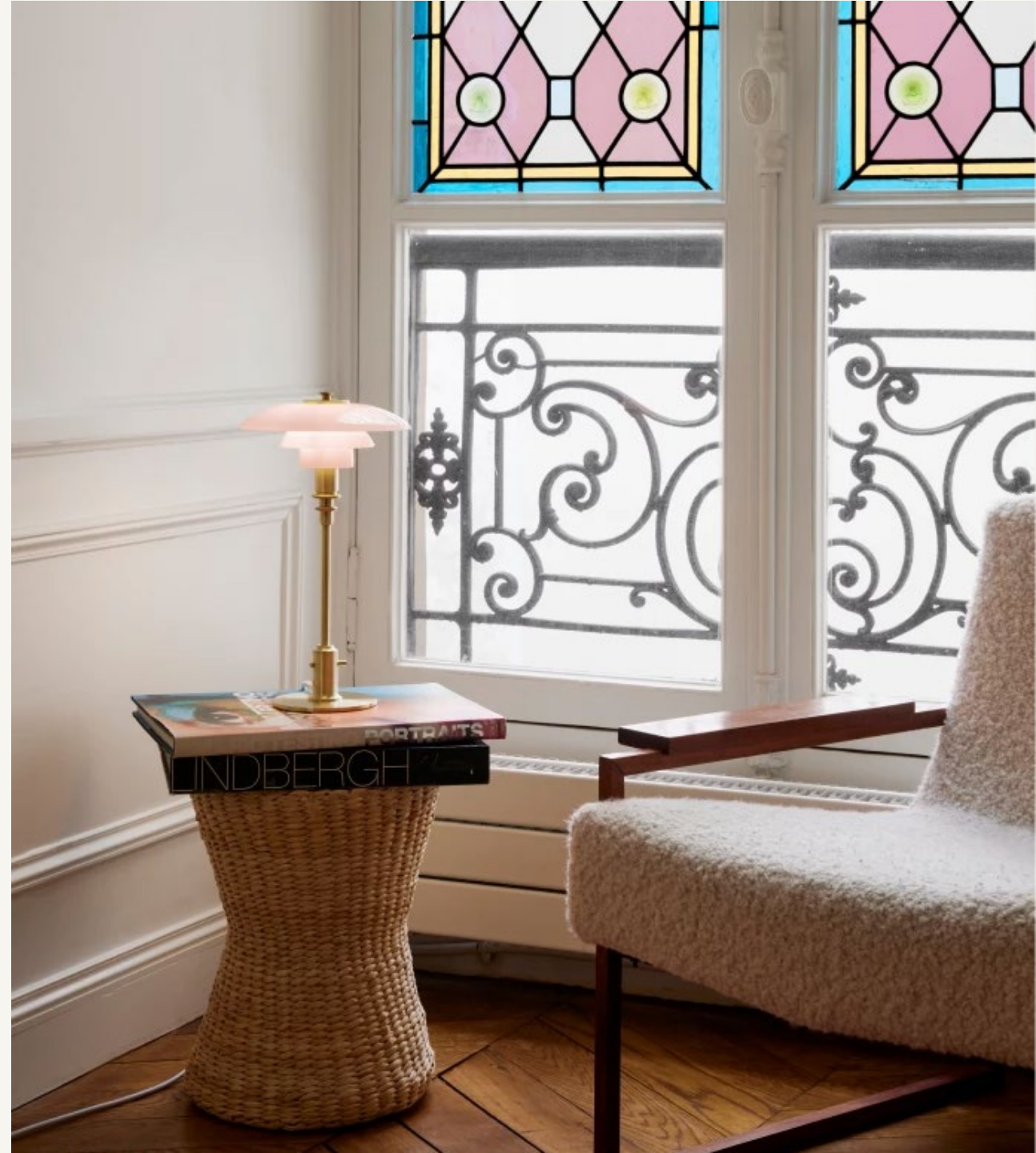
With its name deriving from the curvature of the stem, the petite table lamp has a characteristic form and an adjustable lamp head which can rotate 45 degrees to either, to direct light where it is required. Until the mid-1950s, the PH 2/2 Question Mark Table Lamp was made of brass and available with coloured glass shades in amber, red or yellow, as well as the classic opal glass, to honour this and Henningsen's fascination with colour and light, the PH 2/2 Question Mark Pale Rose Table Lamp was created.



# PH 2/1 TABLE

PH 2/1 Pale Rose Brass Table lamp features intricate design details, which come together to create an elegant expression and a soft, warm light in your home. The glossy pale rose shades are poetic and speak to modern interior trends, while the inside of the shades is sandblasted white, to create the glare-free light characteristic of Louis Poulsen's lamps. Additionally, if left untreated, the brushed brass will patinate beautifully over time, adding character and charm to the already captivating lamp.

Whether you choose to place it by your bedside, on a shelf or on the windowsill, the PH 2/1 Pale Rose Brass Table lamp will cast a pleasant glow over the surrounding area. Give your home a glow up with the PH Pale Rose collection.



# PH 3/2 TABLE

Based on the iconic three-shade system, designed in 1926 and also known as the System PH, the PH 3/2 was designed by Poul Henningsen to provide optimal lighting by creating an island of light on a table or other surface. Introduced in 1927, it was also among the first lamps Henningsen designed with opal glass shades, which provided uniform light thanks to their sandblasted underside.

The PH 3/2 Pale Rose Table Lamp is a modern twist on this iconic design, which features pale rose coloured glass shades, paired with brushed brass elements with fine hairlines that follow the form of the fixture. This combination has an elegant and classic expression, which is timeless and ideal for the modern home.



# PRODUCT OVERVIEW

PH 3½-3 Pendant	PH 3/3 Pendant	VL45 Radiohus Ø175	VL45 Radiohus Ø250
			
\$2,072	\$2,590	\$645	\$805
Item #: 5741939794	Item #: 5741942325	Item #: 5741940770	Item #: 5741940819

PH Artichoke Ø600	PH 2/1 Table	PH 3/2 Table	PH 2/2 Question Mark
			
\$21,800	\$1,698	\$2,145	\$2,055
Item #: 5741940851	Item #: 5744908984	Item #: 5744911502	Item #: 5744909970

**louis poulsen**

ESTABLISHED 1874